

AGENDA

**ROSSMOOR COMMUNITY SERVICES DISTRICT
PARKS AND FACILITIES COMMITTEE MEETING**

IN-PERSON

ROSSMOOR PARK
Community Center
3232 Hedwig Road
Rossmoor, CA 90720

Wednesday, November 2, 2022

7 p.m.

A. ORGANIZATION

1. CALL TO ORDER: 7 p.m.
2. ROLL CALL: Directors Searles, Rips
3. PLEDGE OF ALLEGIANCE
4. PRESENTATIONS
 - a. Esther Hendershott (USTA SoCal Director, Community Tennis) will make a presentation regarding *What the U.S. Tennis Association (USTA) and the National Recreation and Park Association (NRPA) are Doing to Find Solutions for Tennis and Pickleball Courts*

B. PUBLIC FORUM

Any person may address the members of the Parks and Facilities Committee at this time on any subject within the jurisdiction of the Parks and Facilities Committee of the Rossmoor Community Services District.

C. REGULAR CALENDAR

1. A REPORT BY THE GENERAL MANAGER REGARDING THE STATUS OF CONTRACTING A NOISE MITIGATION CONSULTANT(S)

D. ADJOURNMENT

CERTIFICATION OF POSTING

I hereby certify that the attached Agenda for the November 2, 2022, 7 p.m., Parks and Facilities Committee Meeting of the Rossmoor Community Services District was posted at least 24 hours prior to the time of the meeting.

ATTEST:



JOE MENDOZA
General Manager

Date: 10/28/2022

ROSSMOOR COMMUNITY SERVICES DISTRICT

AGENDA ITEM A-4a

Date: November 2, 2022

To: Parks and Facilities Committee
Director Nathan Searles, Chair
Director Jeffrey Rips

From: General Manager Joe Mendoza

Subject: ESTHER HENDERSHOTT (USTA SOCAL DIRECTOR, COMMUNITY TENNIS) WILL MAKE A PRESENTATION REGARDING *WHAT THE U.S. TENNIS ASSOCIATION (USTA) AND THE NATIONAL RECREATION AND PARK ASSOCIATION (NRPA) ARE DOING TO FIND SOLUTIONS FOR TENNIS AND PICKLEBALL COURTS*

RECOMMENDATION

It is recommended that the Rossmoor Community Services District (RCSD) Parks and Facilities Committee receive and file this presentation.

INFORMATION

The General Manager was contacted on Tuesday, October 25, 2022 requesting that an item be placed on the agenda for the November 8, 2022 RCSD Board of Directors meeting for a presentation by a representative of the United States Tennis Association (USTA) regarding tennis and pickleball. It was determined that the presentation should be made to the Parks and Facilities Committee and this was scheduled for tonight's meeting. Making the presentation will be Esther Hendershott (USTA SoCal Director, Community Tennis) to discuss *"What the U.S. Tennis Association (USTA) and the National Recreation and Park Association (NRPA) are doing to find solutions for tennis and pickleball courts."*

USTA informational materials have been provided and are attached for review as Ms. Hendershott makes her presentation.

ATTACHMENTS

1. Letter dated October 25, 2022 from Esther Hendershott addressed to the "City of Rossmoor Board Members" regarding USTA SoCal Recommended Pickleball Co-Lining Policy
2. USTA Statement of Guidance
3. Public Parks Committee Annual Meeting & Conference – March 2022
4. Tennis and Pickleball Participation 2021 - Statistics



October 25, 2022

Subject: USTA SoCal Recommended Pickleball Co-Lining Policy

Dear: City of Rossmoor Board Members

The United States Tennis Association (USTA) has developed this policy recommendation to inform the City of Rossmoor Parks and Recreation Departments of efforts being made for co-lining of tennis courts for pickleball.

Rossmoor Park serves many active tennis players in the City of Rossmoor by providing activities, programs, and leagues. Currently, within the US, there are over 22 million tennis players, and tennis has seen over 20% growth in the last two years (1). By comparison, there are an estimated 4.8 million pickleball players in the US, and that sport has experienced significant growth in the last two years as well (2).

We recognize that pickleball is also a growing sport and support the City of Rossmoor Parks and Recreation Department's efforts to improve access to pickleball, but that should not be to the detriment of a thriving tennis community. Adding pickleball to existing tennis courts creates other challenges that should be factored into any decisions to co-line tennis courts for pickleball, as follows:

1. When played in proximity to tennis, pickleball creates excessive noise that interferes with tennis.
2. Adding pickleball lines on tennis courts creates challenges for competitive league and tournament play due to visual distractions.
3. Many existing tennis facilities would have to take a much-needed tennis court out of service when pickleball is being played to provide a buffer for safety and noise mitigation.

There is a need for more tennis and pickleball facilities, and our recommendation is to plan for dedicated facilities for both sports.

The USTA SoCal recommends implementing pickleball co-lining using the following hierarchy:

1. Identify City Parks that are not active park sites, such as Rossmoor Park, for adding pickleball lines. An example would be Rush Park.
2. Evaluate existing tennis facilities for the construction of dedicated pickleball courts. Some facilities have additional space adjacent to them that may be suitable for pickleball, such as unused softball fields.
3. Similar to tennis, motivated pickle ballers should be motivated to raise funds to further their sport.

USTA SoCal is happy to discuss these recommendations, and we look forward to continued interaction with you on this topic.

Sincerely,

Esther Hendershott
USTA SoCal Director, Community Tennis

USTA Statement Of Guidance

PUBLIC FACILITIES APPROACH TO TENNIS AND PICKLEBALL

As the national governing body for the sport of tennis in the United States and in concert with park professionals, we are putting forth a Statement of Guidance for the development, expansion, and renovation of public facilities and spaces related to tennis and pickleball. This guidance is presented within the context and understanding that tennis and pickleball are currently experiencing significant participation increases throughout the country and that both have ardent supporters advocating for their respective sport. We offer the following as a Statement of Guidance:

PARTICIPATION STATISTICS

- **Tennis** – The 2021 total of 22.6 million tennis players is a 4.5% increase from 2020 and a 27.9% increase from 2019 (4.9 million additional players over that 2-year span).
- **Pickleball** – The 2021 total of 4.8 million pickleball players is a 14.3% increase from 2020 and a 39.3% increase from 2019 (1.36 million additional players over that 2-year span).

OPTION #1: SPORT-SPECIFIC SITES

With citizen participation for both sports at all-time highs and trending toward continued growth, the ideal solution to increased demand is the development and/or expansion of sport-specific public sites. The development of tennis and pickleball facilities as singular-focused sport-specific sites and courts will provide optimum opportunity for use, harmony, and revenue generation for each sport that may be unavailable in shared-use scenarios. These facilities should be offered either as one central facility complex or as separate sport-specific developments to best meet the needs of the citizens.



OPTION #2: NON-TRADITIONAL SPACES

In the event that Option #1 is not possible, both tennis and pickleball can be played and enjoyed by citizens in non-traditional spaces. Look at all public hard surface areas for possible conversion, such as multi-sport court sites and/or vacant parking lot locations. When contemplating any type of conversion affiliated with public facility infrastructure, safety must be at the forefront of all considerations.



OPTION #3: SHARED USE OF TENNIS FACILITIES

In the event that Options #1 and #2 are not possible, in the interest of equitable offerings for both tennis and pickleball, shared usage through blended lines on existing tennis courts is advisable for park locations of two (2) or fewer tennis courts. For park locations of three (3) or more tennis courts, every effort should be made to utilize Option #1 or #2 due to the sustained growth and increasing public demand for both sports.

As you move forward with any decisions, or if you have any questions throughout the process, we would like to reiterate that we are here to serve as a consultative resource to you.

For further information contact:
United States Tennis Association (USTA) - Facilities@usta.com

USTA Statement Of Guidance

PUBLIC FACILITIES APPROACH TO TENNIS AND PICKLEBALL

As the national governing body for the sport of tennis in the United States and in concert with park professionals, we are putting forth a Statement of Guidance for the development, expansion, and renovation of public facilities and spaces related to tennis and pickleball. This guidance is presented within the context and understanding that tennis and pickleball are currently experiencing significant participation increases throughout the country and that both have ardent supporters advocating for their respective sport. We offer the following as a Statement of Guidance:

PARTICIPATION STATISTICS

- **Tennis** – The 2021 total of 22.6 million tennis players is a 4.5% increase from 2020 and a 27.9% increase from 2019 (4.9 million additional players over that 2-year span).
- **Pickleball** – The 2021 total of 4.8 million pickleball players is a 14.3% increase from 2020 and a 39.3% increase from 2019 (1.36 million additional players over that 2-year span).

OPTION #1: SPORT-SPECIFIC SITES

With citizen participation for both sports at all-time highs and trending toward continued growth, the ideal solution to increased demand is the development and/or expansion of sport-specific public sites. The development of tennis and pickleball facilities as singular-focused sport-specific sites and courts will provide optimum opportunity for use, harmony, and revenue generation for each sport that may be unavailable in shared-use scenarios. These facilities should be offered either as one central facility complex or as separate sport-specific developments to best meet the needs of the citizens.



OPTION #2: NON-TRADITIONAL SPACES

In the event that Option #1 is not possible, both tennis and pickleball can be played and enjoyed by citizens in non-traditional spaces. Look at all public hard surface areas for possible conversion, such as multi-sport court sites and/or vacant parking lot locations. When contemplating any type of conversion affiliated with public facility infrastructure, safety must be at the forefront of all considerations.



OPTION #3: SHARED USE OF TENNIS FACILITIES

In the event that Options #1 and #2 are not possible, in the interest of equitable offerings for both tennis and pickleball, shared usage through blended lines on existing tennis courts is advisable for park locations of two (2) or fewer tennis courts. For park locations of three (3) or more tennis courts, every effort should be made to utilize Option #1 or #2 due to the sustained growth and increasing public demand for both sports.

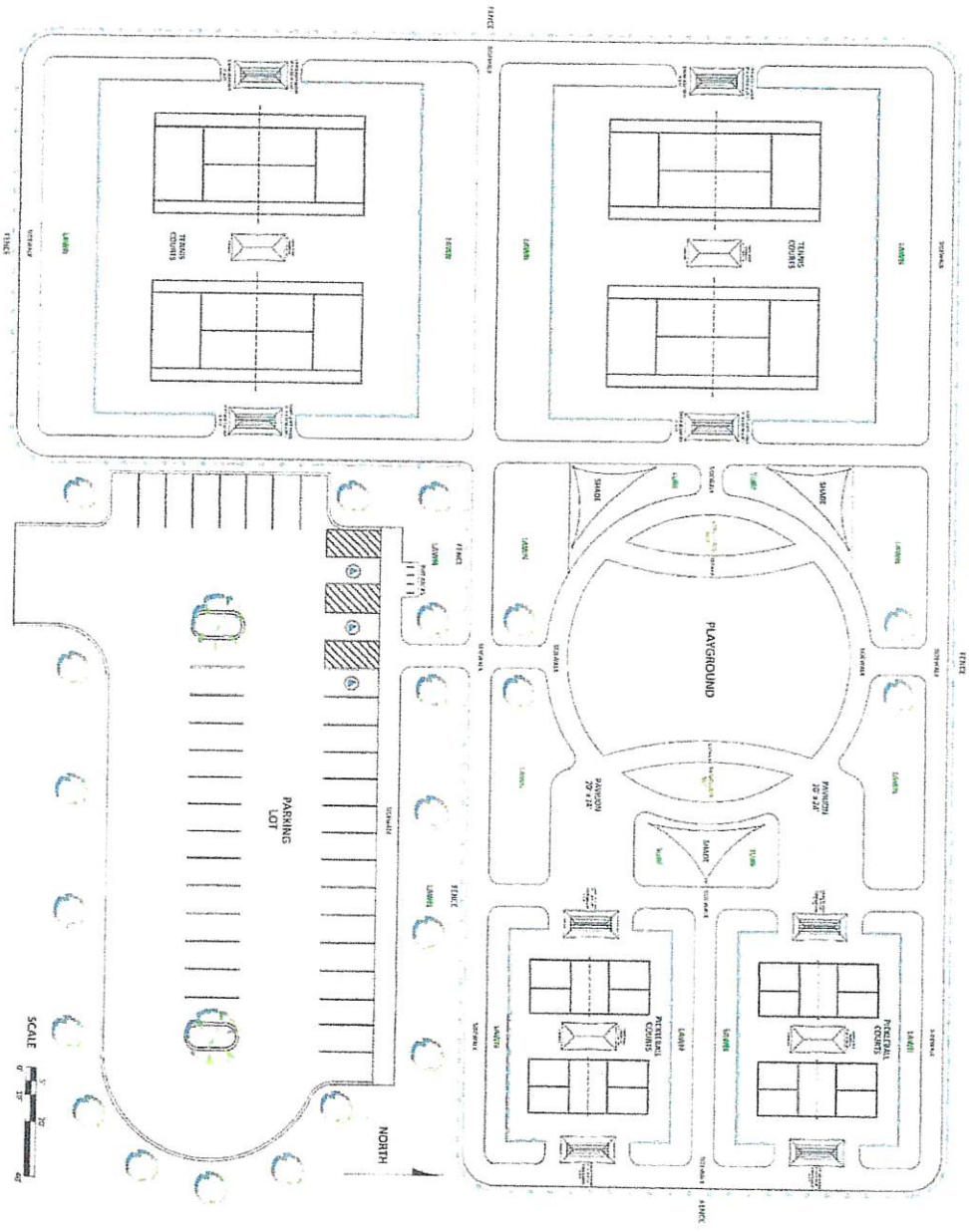
As you move forward with any decisions, or if you have any questions throughout the process, we would like to reiterate that we are here to serve as a consultative resource to you.

For further information contact:
United States Tennis Association (USTA) - Facilities@usta.com

Public Parks Committee

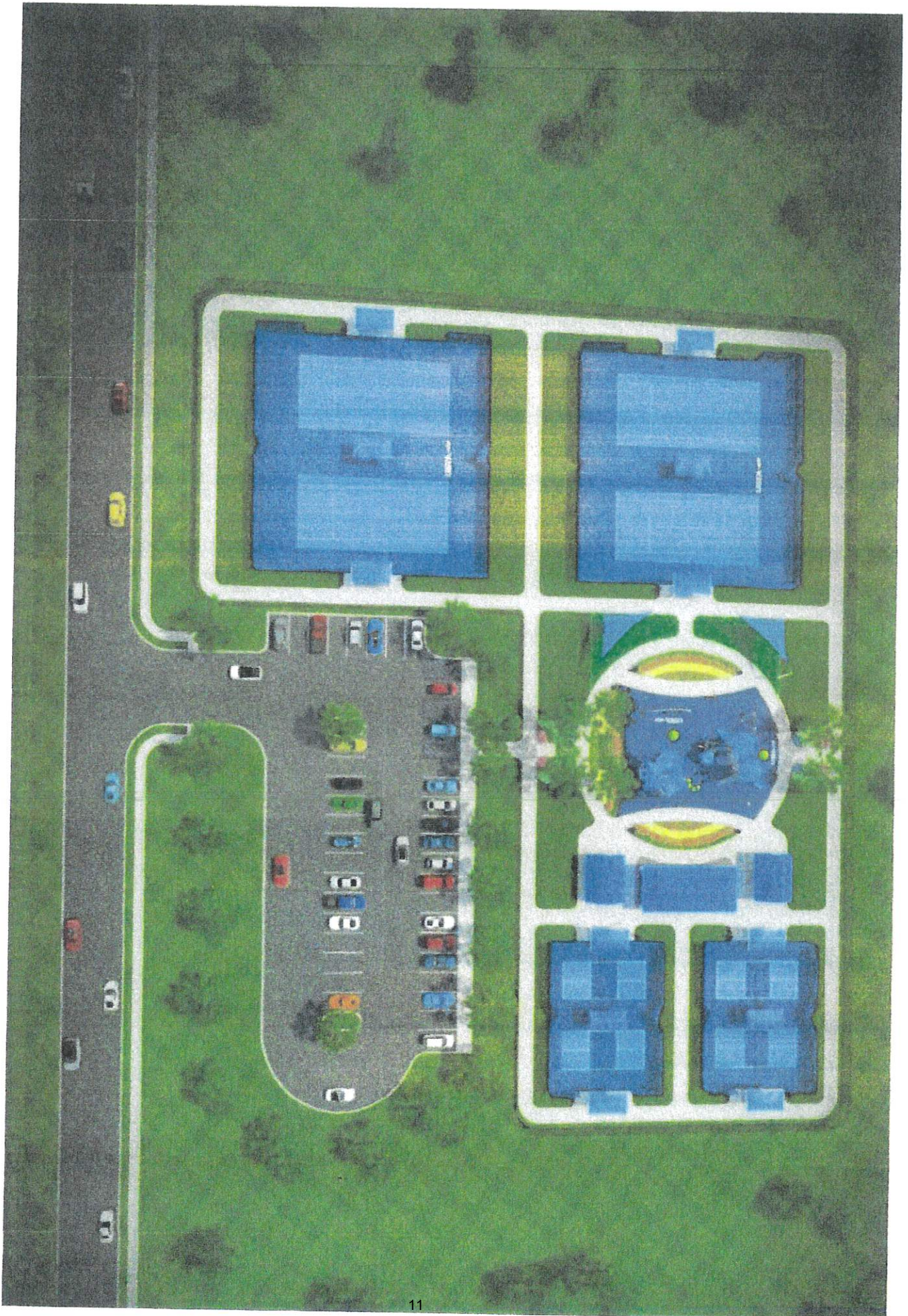
Annual Meeting & Conference | March 2022

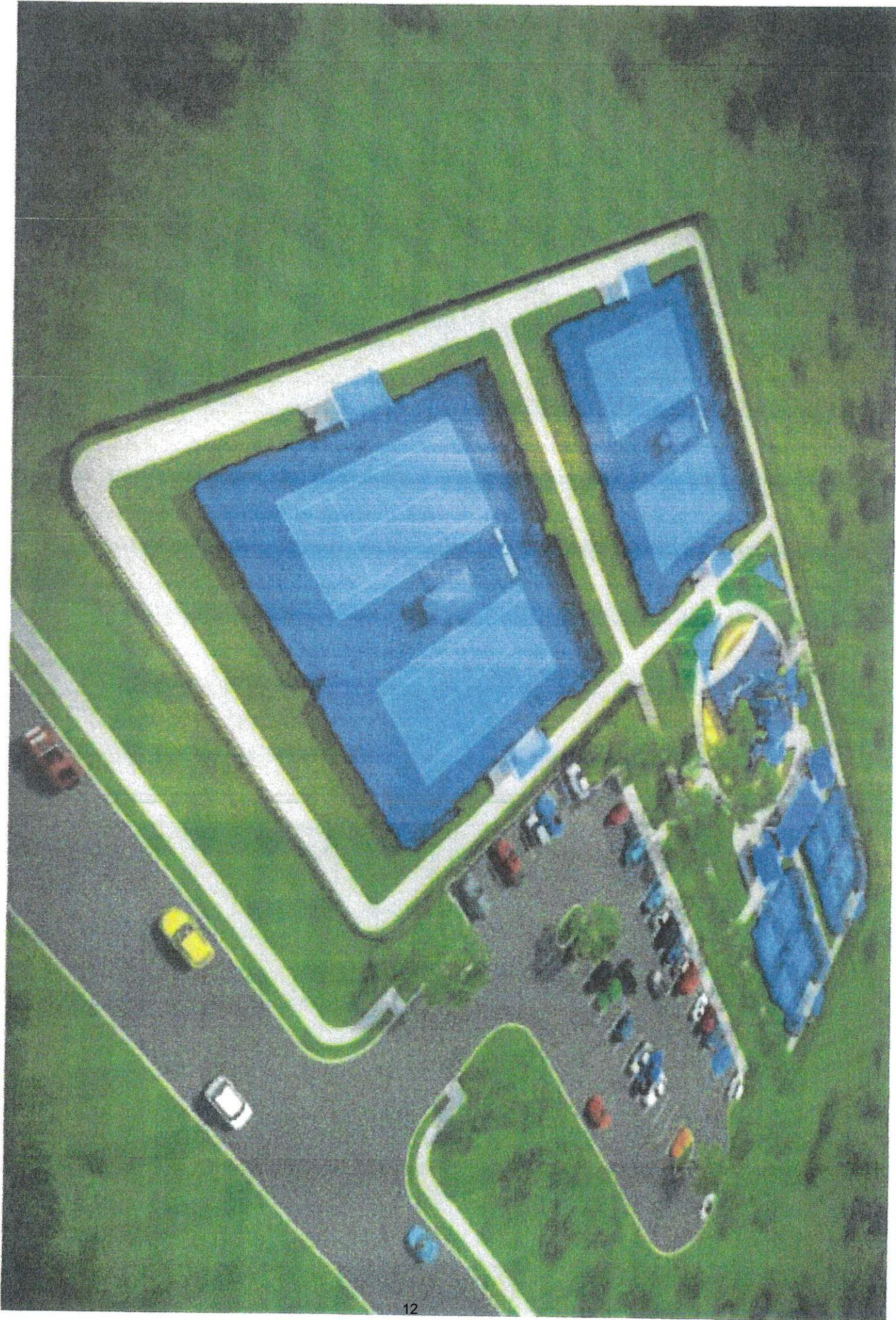


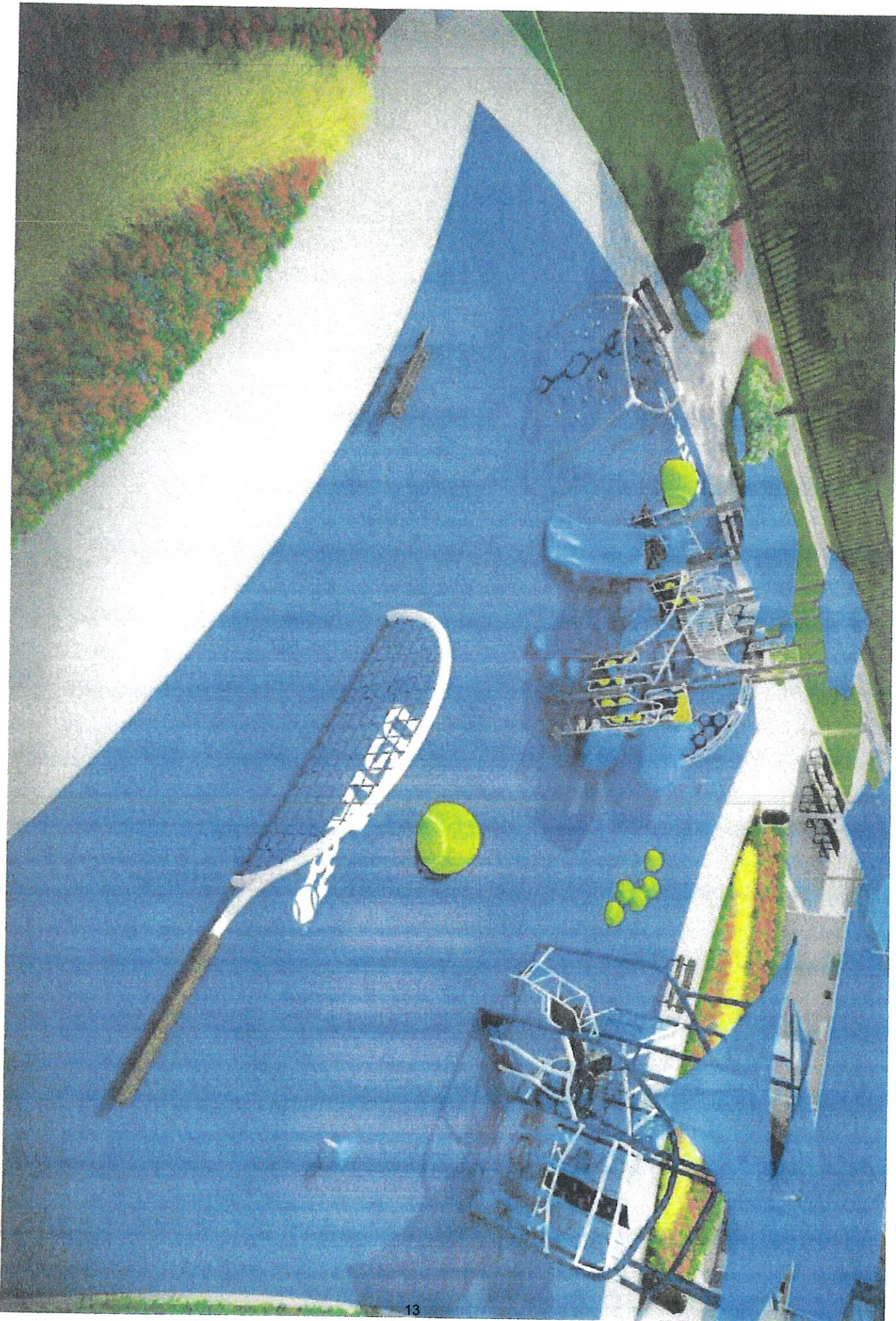


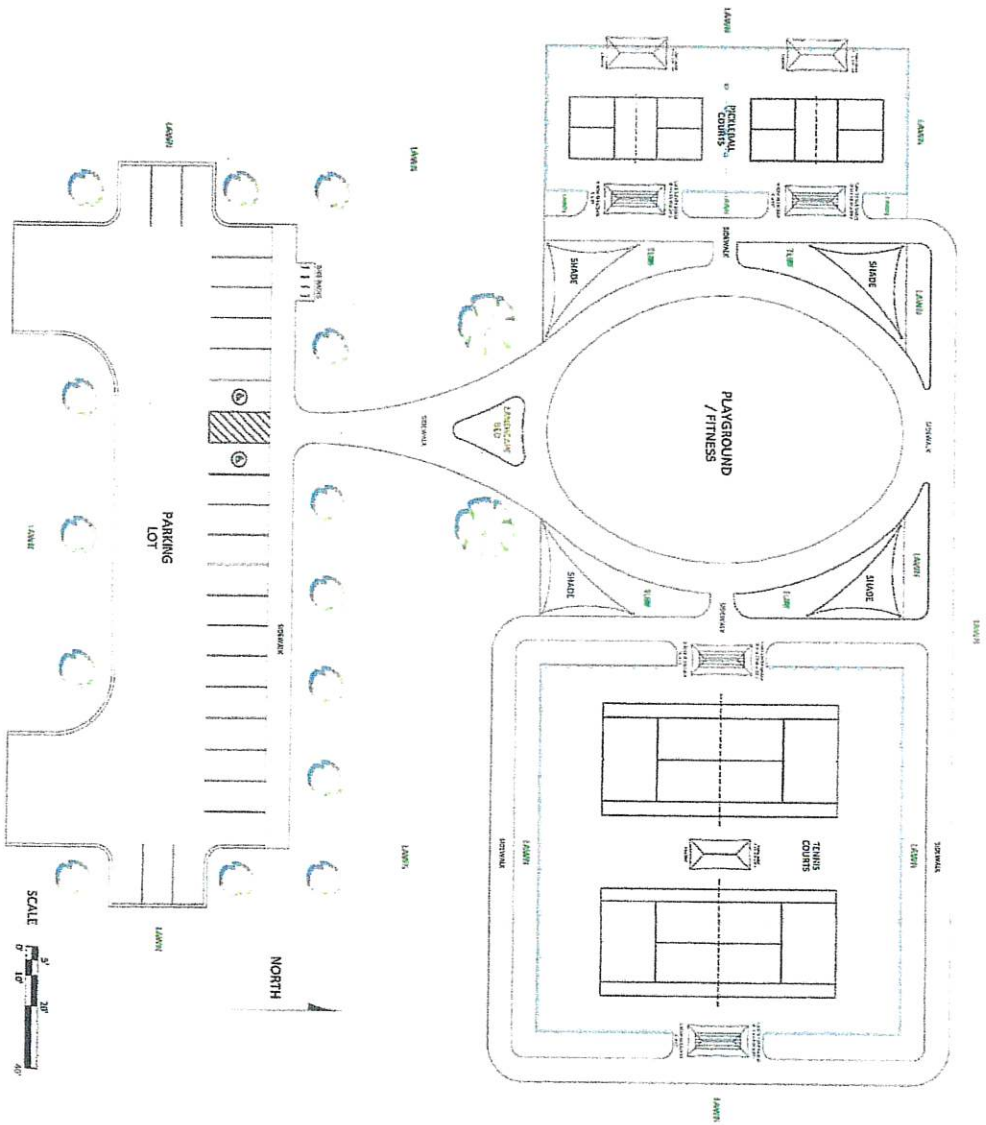
Small Site

- 4 Tennis
- 4 Pickleball



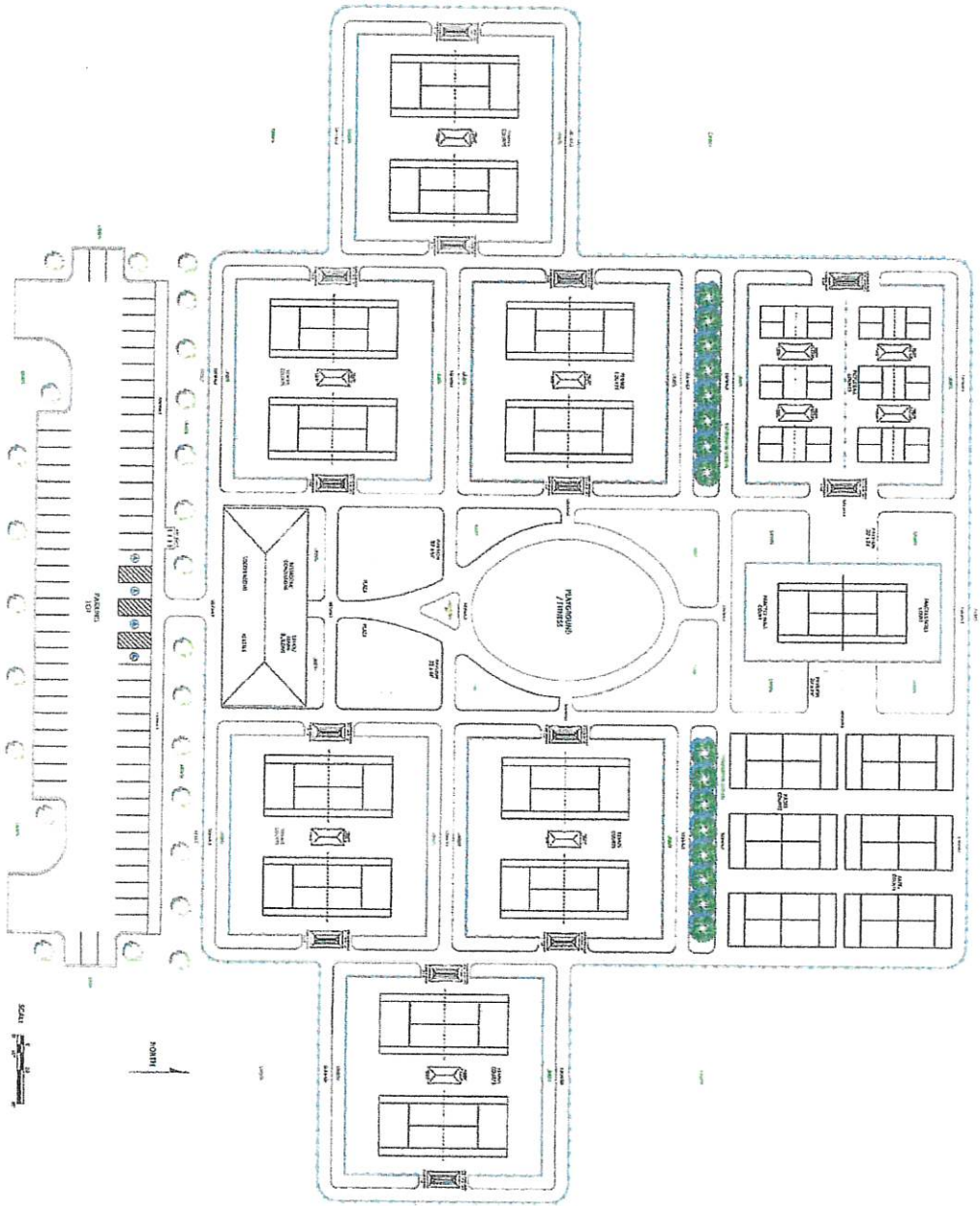






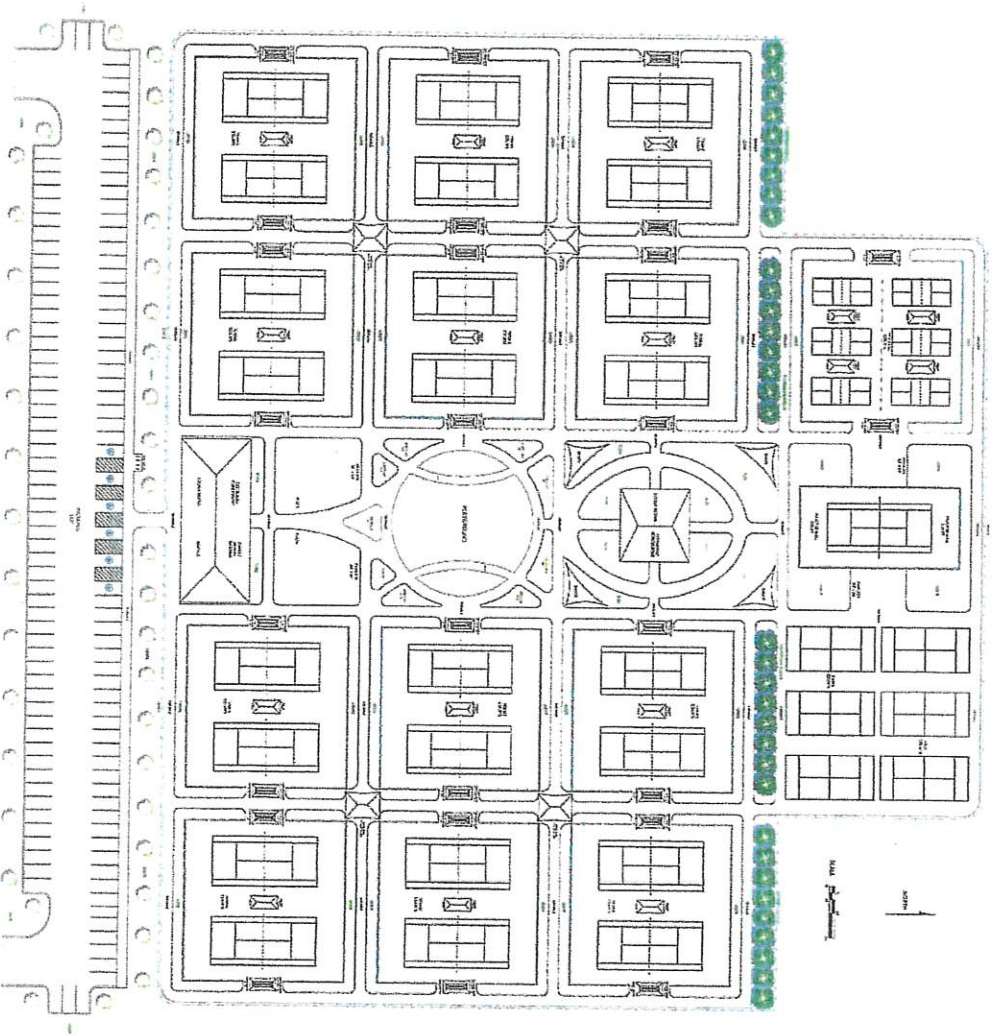
X-Small Site

- 2 Tennis
- 2 Pickleball



Medium Site

- 12 Tennis
- Practice Wall
- 6 Pickleball
- 6 Padel

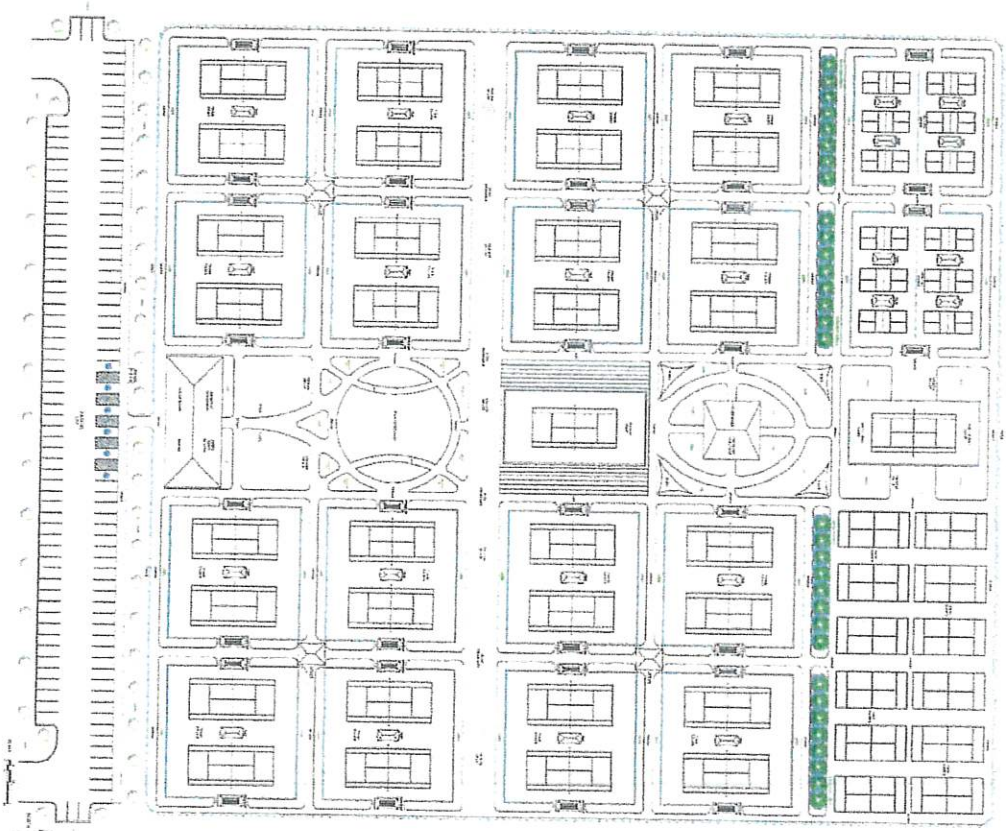


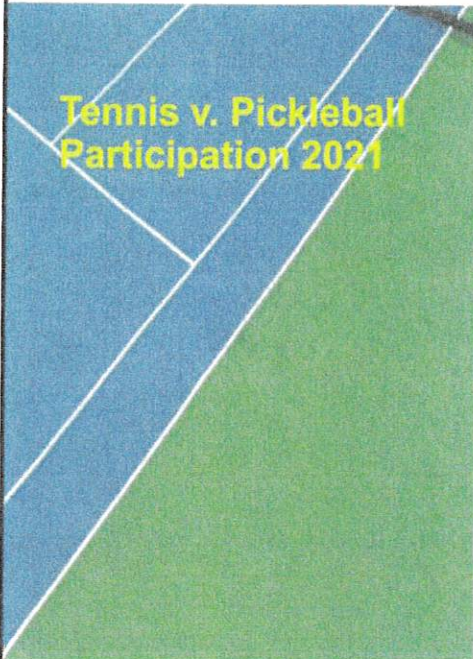
Large Site

- 24 Tennis
- Practice Wall
- 6 Pickleball
- 6 Padel

X-Large Site

- 32 Tennis
- Stadium Court
- Practice Wall
- 12 Pickleball
- 12 Padel

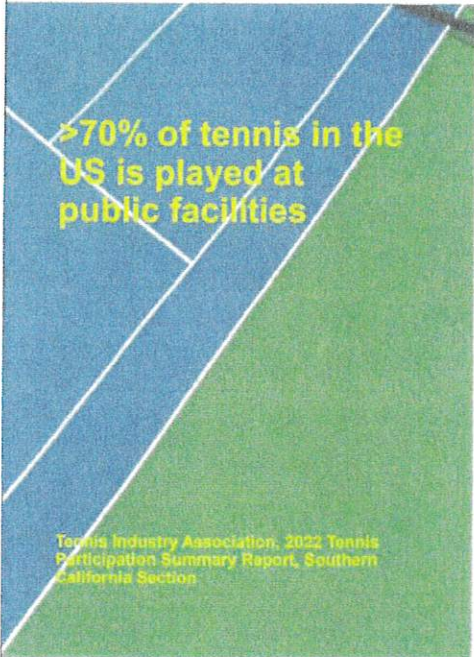




There are 4X more Tennis players in the US than Pickleball players

Players/Courts	Tennis	Pickleball
United States	22.6M	4.8M
California	3.2M	.6M
San Diego	300K	50K
Public Courts (SD)	143	111
Players/Public Court	2,100	450

References:
 Tennis Industry Association, 2022 Tennis Participation Summary Report, Southern California Section
 USA Pickleball Fact Sheet 2022
 San Diego Parks & Rec Report – March 24, 2022



Play Venue		
	Public park	46%
	School/college	14%
	Private club	14%
	Recreational or community center	12%
	Court at private residence	3%
	Commercial/country club	3%
	Apartment/condo	5%
	Other venue	3%

Open with ▾

Public Recreational Facilities Have Peak Times



Peninsula Tennis Club



Robb Field – Soccer Field

Monday, April 4, 2022 – 9:00 a.m.

ROSSMOOR COMMUNITY SERVICES DISTRICT

AGENDA ITEM C-1

Date: November 2, 2022

To: Parks and Facilities Committee
Director Nathan Searles, Chair
Director Jeffrey Rips

From: General Manager Joe Mendoza

Subject: A REPORT BY THE GENERAL MANAGER REGARDING THE STATUS OF CONTRACTING A NOISE MITIGATION CONSULTANT(S)

RECOMMENDATION

It is recommended that the Rossmoor Community Services District (RCSD) Parks and Facilities Committee review and file this report.

INFORMATION

At the October 11, 2022 RCSD Board of Directors meeting, the General Manager was given direction to research noise mitigation consultants to further study the impact of pickleball noise at Rossmoor Park. The Board authorized the General Manager to retain a consultant(s). To date, the General Manager is in negotiation with consultants to determine cost, scope of work that will include measuring and understanding the noise the sport of pickleball creates, determining approximate levels at the homes surrounding the Rossmoor Park tennis courts, and investigating the possibility of noise mitigation. These are just a few of the scope of work topics being discussed with the potential consultants.

The General Manager is working on a study completion date and will have more information at the meeting.

ATTACHMENTS

None