

ROSSMOOR

COMMUNITY SERVICES DISTRICT



Parks & Facilities Committee Meeting Agenda Package

December 3, 2015

PARKS & FACILITIES COMMITTEE

AGENDA

ROSSMOOR COMMUNITY SERVICES DISTRICT

PARKS AND FACILITIES COMMITTEE MEETING

RUSH PARK
Administration Building
3001 Blume Drive
Rossmoor, California

Thursday, December 3, 2015
4:00 p.m.

A. ORGANIZATION

1. CALL TO ORDER: 4:00 p.m.
2. ROLL CALL: Directors Kahlert, Maynard
3. PLEDGE OF ALLEGIANCE

B. PUBLIC FORUM

Any person may address the members of the Parks and Facilities Committee at this time upon any subject within the jurisdiction of the Parks and Facilities Committee of the Rossmoor Community Services District.

C. REGULAR CALENDAR


1. DISCUSSION WITH GENERAL MANAGER RE: RHA PROPOSAL—
KEMPTON PARK DEMONSTRATION PROJECT

D. ADJOURNMENT

CERTIFICATION OF POSTING

I hereby certify that the attached Agenda for the Thursday, December 3, 2015, 4:00 p.m. Parks and Facilities Committee Meeting of the Rossmoor Community Services District was posted at least 24 hours prior to the time of the meeting.

ATTEST:


James D. Ruth
General Manager


Date

ROSSMOOR COMMUNITY SERVICES DISTRICT

AGENDA ITEM C-1

Date: December 3, 2015
To: Parks and Facilities Committee
From: General Manager
Subject: DISCUSSION WITH GENERAL MANAGER RE: RHA LANDSCAPE
DEMONSTRATION PROJECT AT KEMPTON MINI-PARK

RECOMMENDATION:

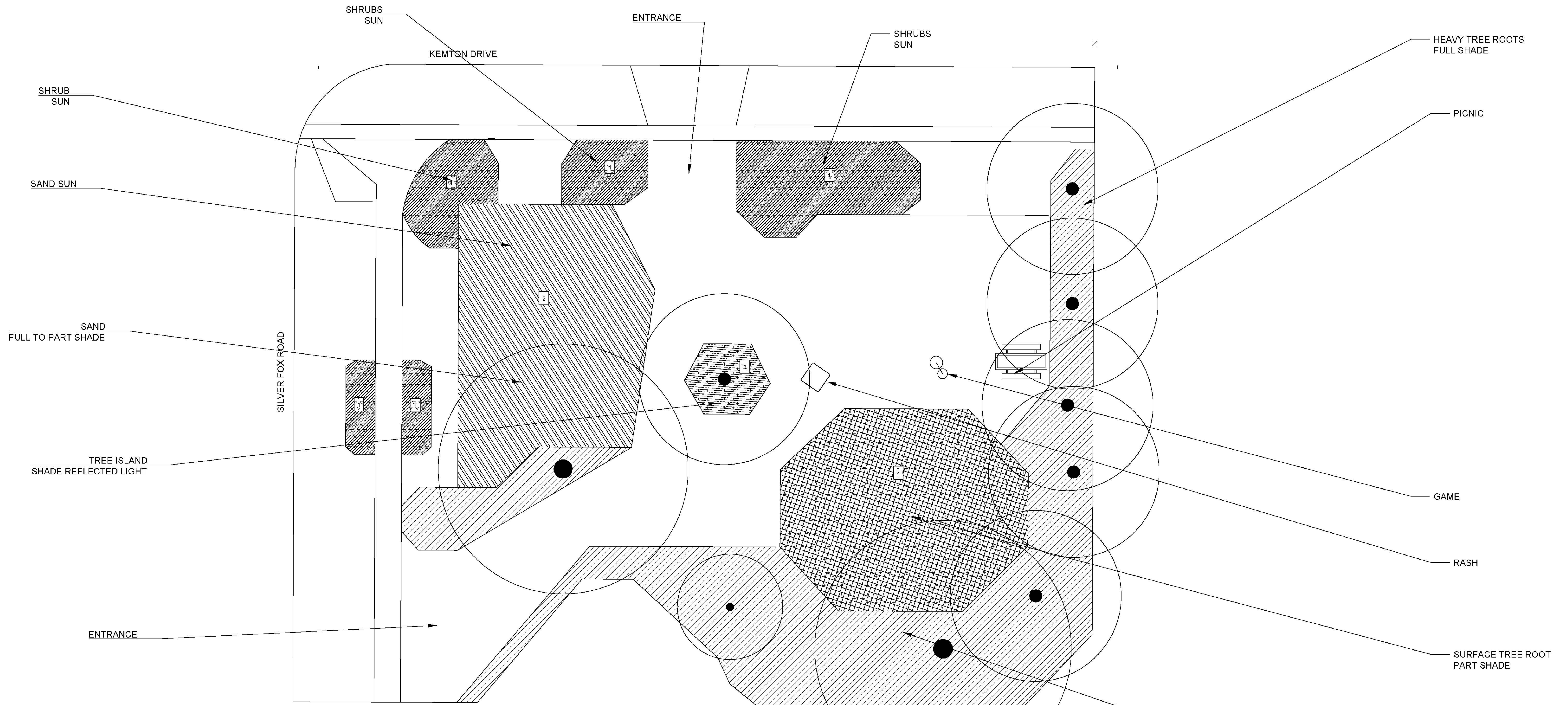
It is recommended that the Committee review and make recommendations to Board on RHA's Landscape Demonstration Project at Kempton Mini-Park.

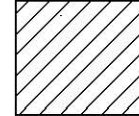
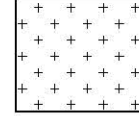

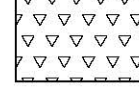
BACKGROUND:

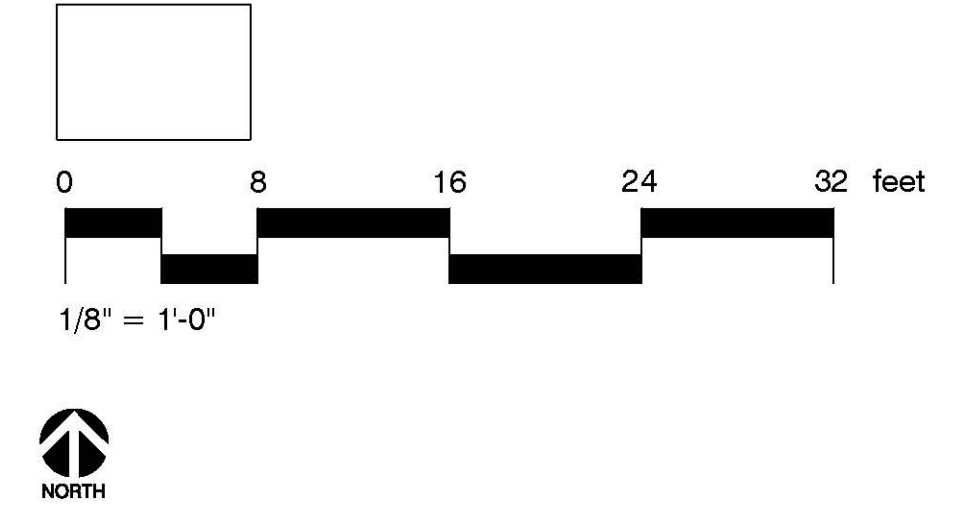
In response to drought related issues, the RHA is proposing to assist the District in turf removal at Kempton Mini-Park. The RHA is proposing to remove grass turf and install drought tolerant landscaping. The RHA will present their proposal, including drawings and costs associated with the project.

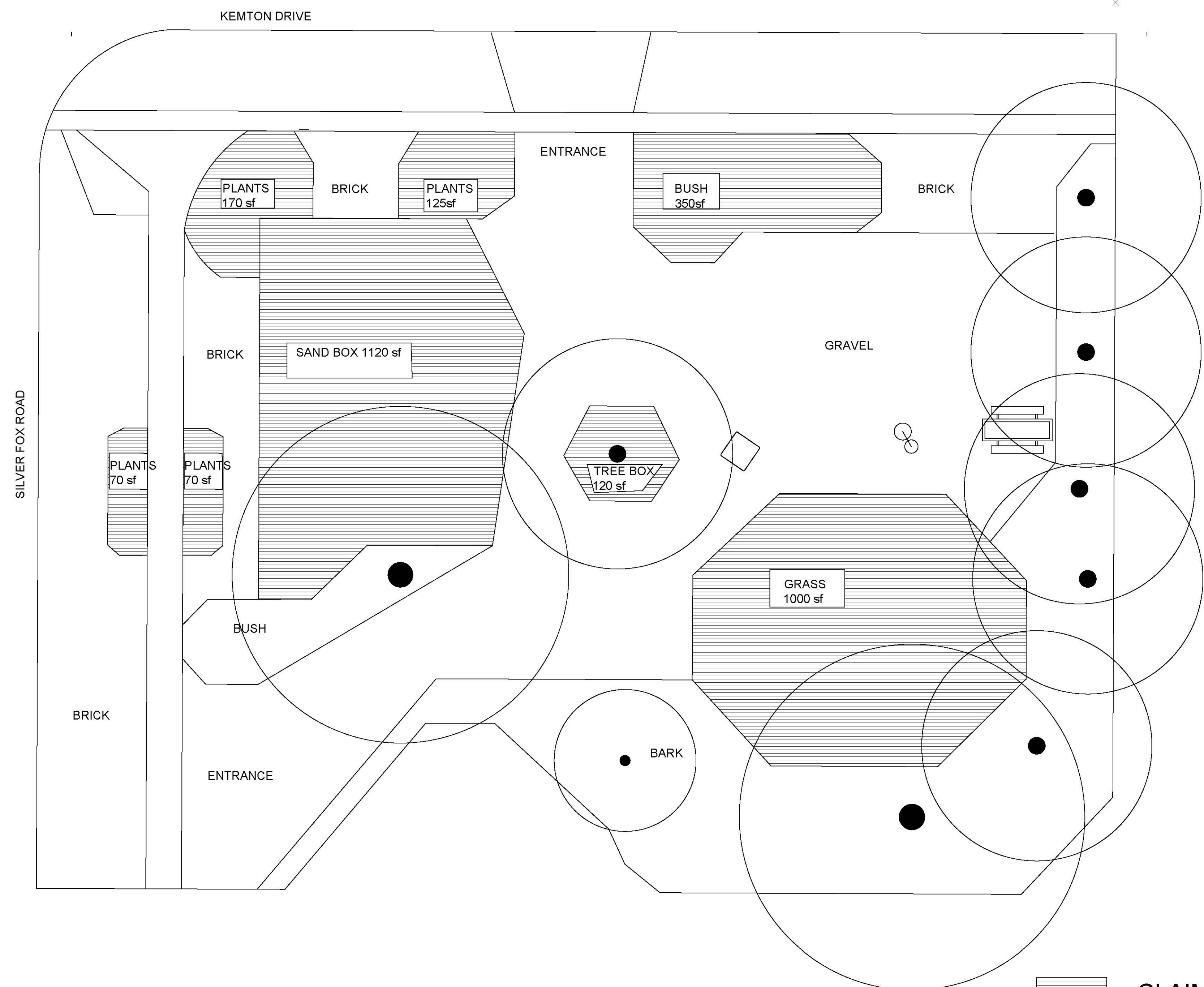
ATTACHMENTS:

1. Kempton Park Plans

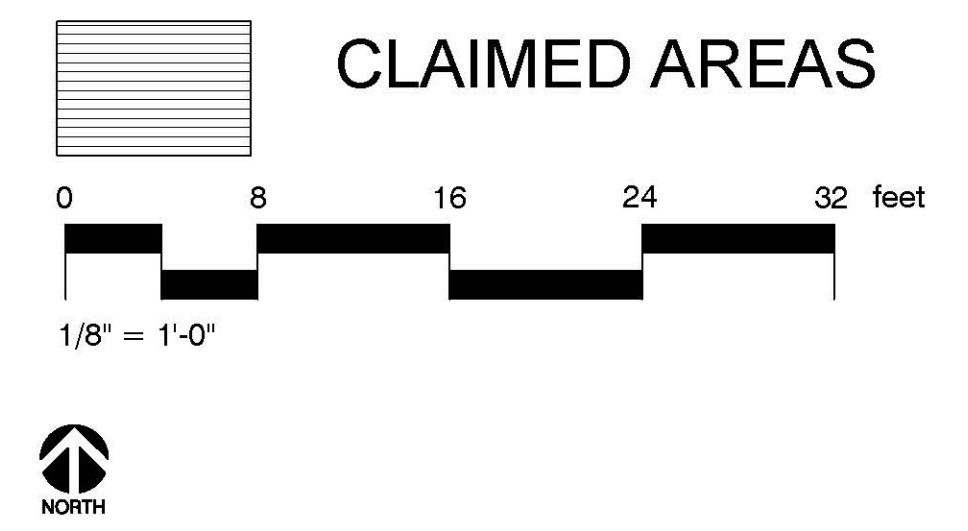


-  TREE ROOT, HEAVY ROOTS AREA
-  LAWN
-  SAND
-  SHRUBS=PLANTS

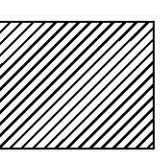




claim areas description

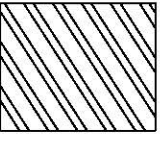


Goal: To Promote and Educate the Public about Drought Tolerant, Water Saving Landscape Alternatives



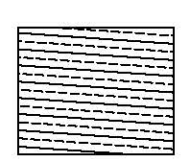
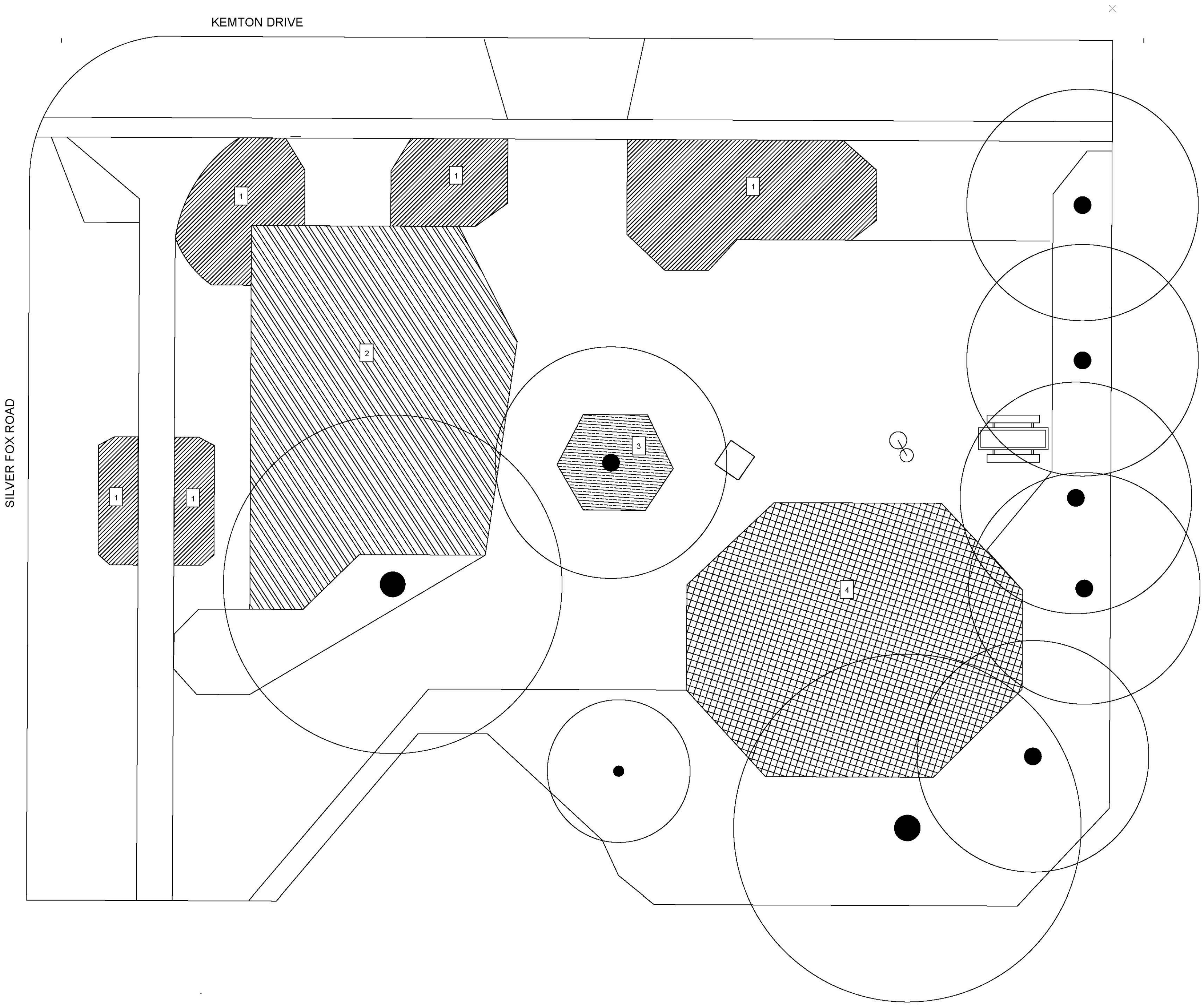
1-PARK ENTRANCE DROUGHT TOLERANT WELCOMING PARK IDENTITY

Mixing Australians, Mediterranean, Natives and Succulents. The public is educated on how to create an ultimate drought Tolerant garden that will perform nicely during the various seasons



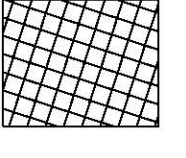
2 - CALIFORNIA NATIVE GARDEN

Within this Area the public is educated on California Native Plants. The public can witness the benefits of using California Native plants, and their effect on attracting butterflies, birds, humming birds and bees. They can observe the plants performances during the various seasons.



3 - PARKWAY DROUGHT TOLERANT SPACE

This is the opportunity to educate the public on parkway drought tolerant planting. Parkways are some times the trickier space to design as they usually present large tree and shade as for this space.



4 - SMALL SUCCULENTS AND GROUND COVER SPACE

Due to the constraints of this space, (mainly surface tree root as well as partial shade) , this space could be a beautifully artistically design succulents garden. With also a variety of path material that lead the viewer through the space.

